

Klauke



SYSTEM SOLUTIONS FOR DATA CENTERS

ELECTRICAL CONNECTION SYSTEMS



Tubular cable lugs, Cu, standard type 6 - 400 mm², R-Series

- For multi-stranded round conductors, e.g. to EN 60228 Cl. 2
- In combination with EKM 60 ID and EK 30 ID suitable for fine-stranded conductor
- For pre-rounded multi-stranded sector shaped conductors



Tubular cable lugs, acc. to DIN, Cu 6 - 1000 mm²

- For round conductors, e.g. acc. to EN 60228 Cl. 1, 2, 5 and 6
- For non-tension copper cables, e.g. to DIN 48201-1
- For pre-rounded multi-stranded sector shaped conductors



Tubular cable lugs for switchgear connections, standard type 35 - 300 mm²

- For multi-stranded round conductors, e.g. to EN 60228 Cl. 2
- In combination with EKM 60 ID and EK 30 ID suitable for fine-stranded conductor
- For connecting in switch cabinets with reduced connecting space



Tubular cable lugs, Cu 10 - 300 mm², F-Series

- For fine and superfine stranded round conductors, e.g. to EN 60228 Cl. 5 and 6
- Pipe dimension adjusted for fine and superfine stranded conductors
- Simple introduction of spliced conductors due to special widening



Compression cable lugs, Al/Cu and Aluminium

**Al/Cu: 16 - 400 mm²,
Aluminium: 16 - 500 mm²**

- For non-tension connections of Al conductors acc. to EN 60228
- Tube dimension to DIN 46329

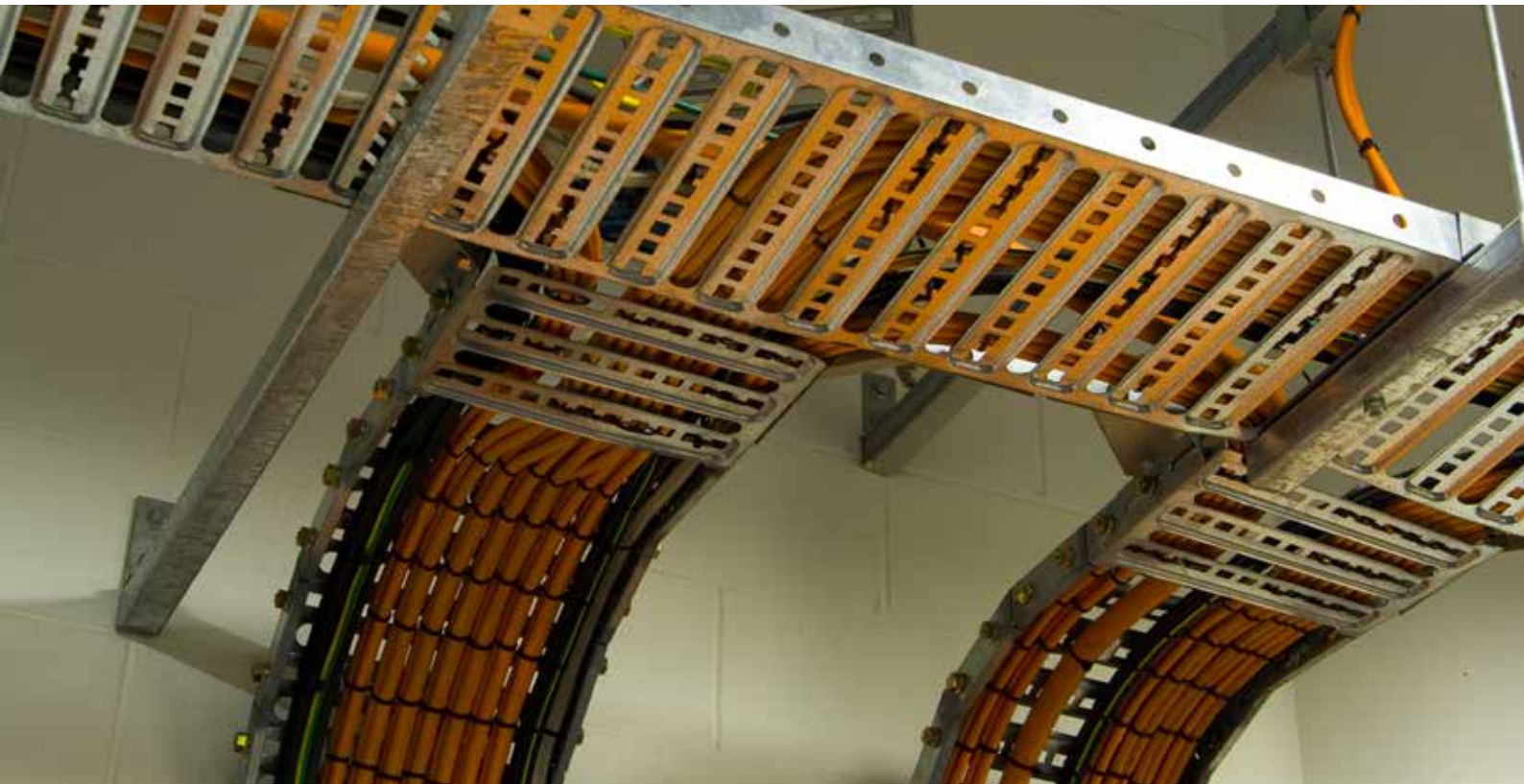


Compression joints, Al/Cu and Aluminium

**Al/Cu: 10 - 300 mm²,
Aluminium: 16 - 300 mm²**

- For non-tension connections of Al conductors acc. to EN 60228
- Tube dimension to DIN 46329





Insulated wire ferrule according to DIN with Easy-Entry

- For fine and superfine stranded conductors, e.g. to DIN EN 60228 Cl. 5 and 6
- Easy-Entry insulation for splice-free cable insertion
- Alternative color coding available



Insulated crimped cable lugs 0,1 - 6 mm²

- For fine and superfine stranded conductors, e.g. to DIN EN 60228 Cl. 5 and 6
- According to DIN 46237
- High-quality brazing process in the crimping area



C-type branch clamps, Cu, multi-purpose clamps

- For non-tension copper cables, e.g. acc. to DIN 48201-1
- Ideal for clamping different conductor cross-sections e.g. acc. to EN 60228 Cl. 1 and 2
- No need to cut the main conductor
- Optimum conducting characteristics in combination with grease



C-type branch clamps, Cu

- For non-tension copper cables, e.g. to DIN 48201-1
- Ideal for clamping identical conductor cross-sections e.g. to DIN EN 60228 Cl. 1 and 2
- No need to cut the main conductor



Branch clamps in H-type, Cu

- For non-tension copper cables, e.g. acc. to DIN 48201-1
- Ideal for clamping identical conductor cross-sections e.g. acc. to EN 60228 Cl. 1 and 2
- Lightning protection tested to EN 50164-1
- No need to cut the main conductor



CRIMPING & CUTTING



EK WF 120 ML

Battery powered hydraulic crimping tool 6 - 120 mm²

- Safe crimping with innovative technology
- Innovative square (comb) pressing
- No change of crimping dies required



EKM 60 ID

Battery powered hydraulic crimping tool 10 - 240 mm²

- Extra large crimping area due to innovative 2-stage telescopic cylinder
- Indent crimping – no change of crimping dies required



EKM 60/22

Battery powered hydraulic crimping tool 6 - 300 mm²

- **Extremely fast:**
Automatic retract stop (ARS) for positioning control in case of multiple crimps



EK 120/42

Battery powered hydraulic crimping tool 16 - 400 mm²

- Up to 60 % fewer crimps thanks to wide crimping in comparison to 6 t tools
- C-head with very wide crimping range to 400 mm²



EK 135 FT

Battery powered hydraulic crimping tool 10 - 630 mm²

- Very large crimping range to 630 mm²
- Very powerful with a crimping force of 13.5 t



EK 60 VP/FT

Battery powered hydraulic crimping tool 16 - 300 mm²

- Suitable for crimping tubular cable lugs and connectors to 300 mm²
- Quad-point indent crimping with patented centring system, no crimping dies required





ESM 50

Battery powered hydraulic cutting tool 50 mm dia. for copper and aluminium cable

- For cutting copper and aluminium cables (fine-stranded also)
- Saves time with multiple cuts thanks to innovative opening mechanism
- Sehr geringes Gewicht (3kg)



ES 85 / ES 105

Battery powered hydraulic cutting tool Ø 85 mm / Ø 105 mm for copper and aluminium cables

- Saves time with multiple cuts thanks to innovative opening mechanism
- Also suitable for cables with lightweight steel armouring (depending on cable type)



EK WF 50 ML

Electromechanical crimping tool 0.5 - 50 mm² for cable end-sleeves and twin cable end-sleeves

- One crimping profile to suit all common conductors
- Fast, easy replacement of crimping dies
- Fewer crimpings thanks to optimal application width



EK SD 50 ML

Electromechanical Stripping Tool 6 - 35 mm²

- One tool for all common insulation types
- Replacing inserts is fast and easy
- Fast and effortless stripping and cutting



EKM 60 UNV

Battery powered hydraulic universal tool 6 - 300 mm²

- One head for crimping, cutting and punching - one tool for all



EBS 6 L GKS

Battery powered hydraulic cable tray cutter 6 mm dia.

- No follow-up work required thanks to burr-free cutting
- Fast and efficient operations:
The cut is made in less than 1 second





RIDGID

GREENLEE

Klauke

Get the latest information on products, services and promotions
by signing up to our newsletter:

[KLAUKE.COM/NEWSLETTER](https://www.klauke.com/newsletter)



Follow us!



© 2025 Gustav Klauke GmbH. All rights reserved. The Klauke logo and the Emerson logo are registered trademarks of Emerson Electric Co. and its subsidiaries in the USA and in other countries. All other logos are the property of their respective owners. Subject to change. BRREZENEN 02/25 I

Klauke

Gustav Klauke GmbH
Auf dem Knapp 46
D-42855 Remscheid

Tel.: +49 (0) 2191 / 907 - 0
Klauke-Info@Emerson.com
Klauke.com

EMERSON